

Getting Started with Database2webXXL

Database2webXXL provides an easy to use web interface to any database using ODBC or JDBC connections. The web interface has very low requirements which make possible to use any device and browser as client. Database2webXXL enables you to connect to your remote database from anywhere on the world with any device, even to databases without network support (such as MS-Access).

Features

- Connection over ODBC or JDBC
- Install custom JDBC drivers as plug-in
- Customizable HTTP port
- User management, support for multiple users
- Create, read, update and delete records
- Search and filter records
- Supports foreign keys and referenced tables.
Lookup in reference table while editing and searching records
- Sort the results
- Includes an example database
- NO NEED FOR EXTRA SOFTWARE INSTALLATION
(such as Web-Servers, ASP, PHP, etc.)

Requirements

Host side:

Windows 98, ME, 2000, XP
Sun Java 1.4.2 or higher

Client side:

HTTP 1.0 and HTML capable browser on any platform

Installation

Download the latest version of Database2webXXL on <http://www.xxlshare.net/> and follow the instructions to install and to get a license key.

License & Features:

	Personal Edition	Pro Edition
Banner on login page	YES	NO
Concurrent connection limit	YES (30 days without limit)	NO
Price	FREE	See http://www.xxlshare.net/

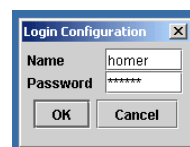
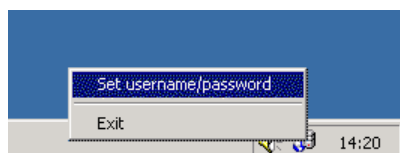
Administration

1) Setting administrator name and password

Right-click the Database2webXXL icon on taskbar and select “Set username/password”.

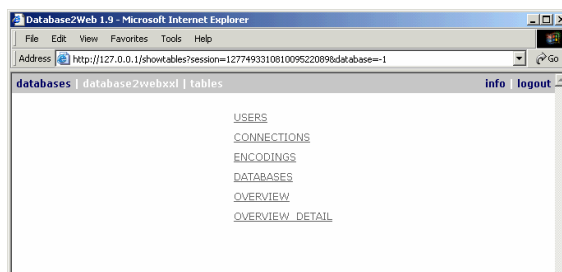
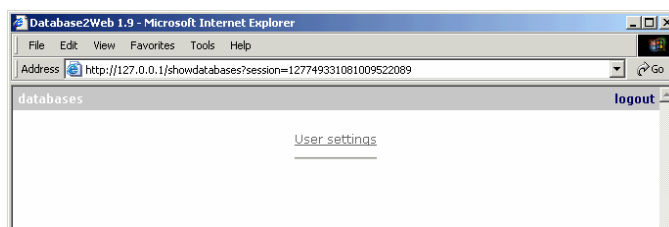
Set your username and password using the following pop-up window.

(Default administrator username/password is demo/demo)



2) Configuration of users and database connections

Open the web interface of Database2webXXL (<http://127.0.0.1/> for local host). Use your administrator name and password to login. As an administrator you see a link named “User settings” on the first page.



Use the table USERS to add or edit users. Use the table DATABASES to bind databases to users. Use the table OVERVIEW to check your configuration (see “Using the Web Interface” for detail).

The tables of CONNECTIONS and ENCODINGS are only for advanced users. It is recommended not to edit these tables if you are not sure. To install a custom JDBC driver simply copy the driver to the “JDBC” directory in Database2webXXL program directory and add proper information into CONNECTIONS table.

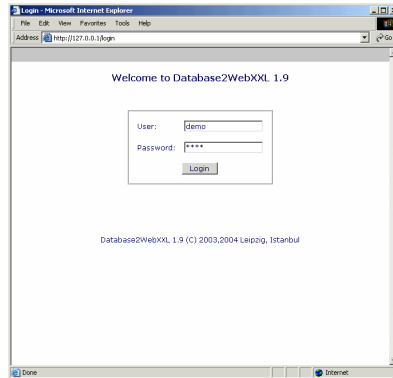
Important note: The username and password defined in Database2webXXL will be forwarded to the underlying database. The user name and password you set should match the username and password defined in your databases!

Security note: Your passwords are saved encrypted in Database2webXXL. There is no way to reconstruct your passwords using Database2webXXL files.

Using the Web Interface

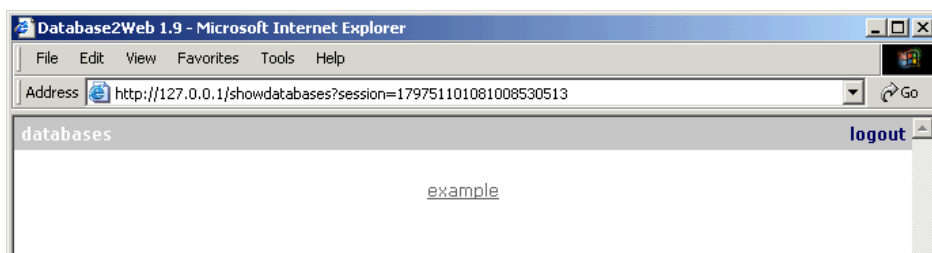
1) Login

Use your host address (or <http://127.0.0.1> for local host) to connect to the web interface of Database2webXXL. The first page is the entry page where you should type your username and password to login. You can connect to the sample database using “demo” for username and password.



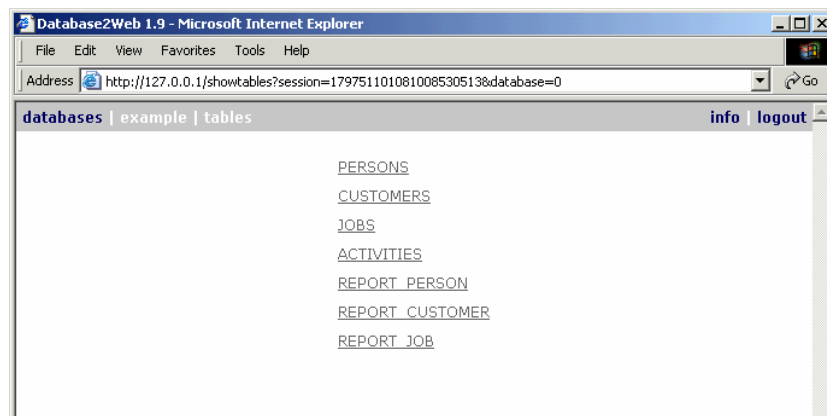
2) Selecting a database

The next page is a list of databases you are allowed to connect to (see Administration). If you logged in as user “demo” you must see a link to the sample database* .



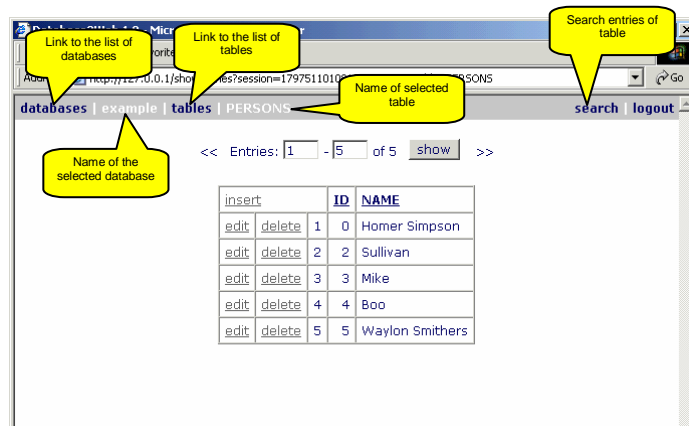
3) Selecting a table

On the next page you get the list of tables of selected database. You can now choose a table to see the entries.

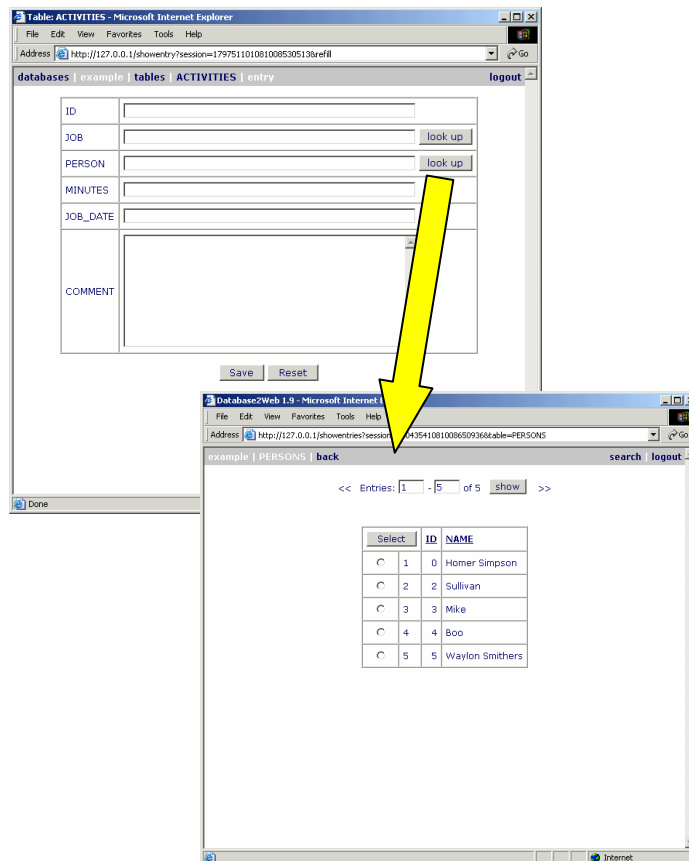


4) Working with the selected table

Please refer to the below figure for using list and search option.



If your database contains foreign keys and related tables, Database2webXXL automatically offers you lookup feature while inserting and updating records.



(*) The sample database is a simple time tracking solution. After defining the personnel, customers and jobs you can keep record of time billed for activities. You can call reports by personnel, jobs and customers.